

LEASEHOLD



House - Semi-Detached

14 EGLINGTON AVENUE, WHISTON, PRESCOT, L35 3RB

Asking Price

£190,000

FEATURES

- Four bedroom semi detached property
- Situated in a cul-de-sac location
- Close to good local schools, Whiston Village and transport links
- Entrance hall, lounge with feature fireplace
- Dining Room and fitted kitchen with appliances
- Family bathroom with a modern three piece suite
- Garden at the rear with decked seating and lawn
- Block paved driveway at the front for several vehicles



BROOKS
ESTATE AND LETTING AGENTS LTD

4 Bedroom House - Semi-Detached

located in Prescot

A lovely four-bedroom semi-detached property situated in a cul-de-sac location, within walking distance of Whiston Village, Whiston train station, excellent local schools, and transport links. The accommodation briefly comprises an entrance hall, lounge with feature fireplace, dining room, and a fitted kitchen with built-in appliances. To the first floor are three bedrooms and a modern family bathroom. The second floor benefits from a loft conversion providing a double bedroom. Externally, the property offers a rear garden and a driveway providing off-road parking for several vehicles. An early viewing is highly recommended.

EPC Grade: C

Call us on

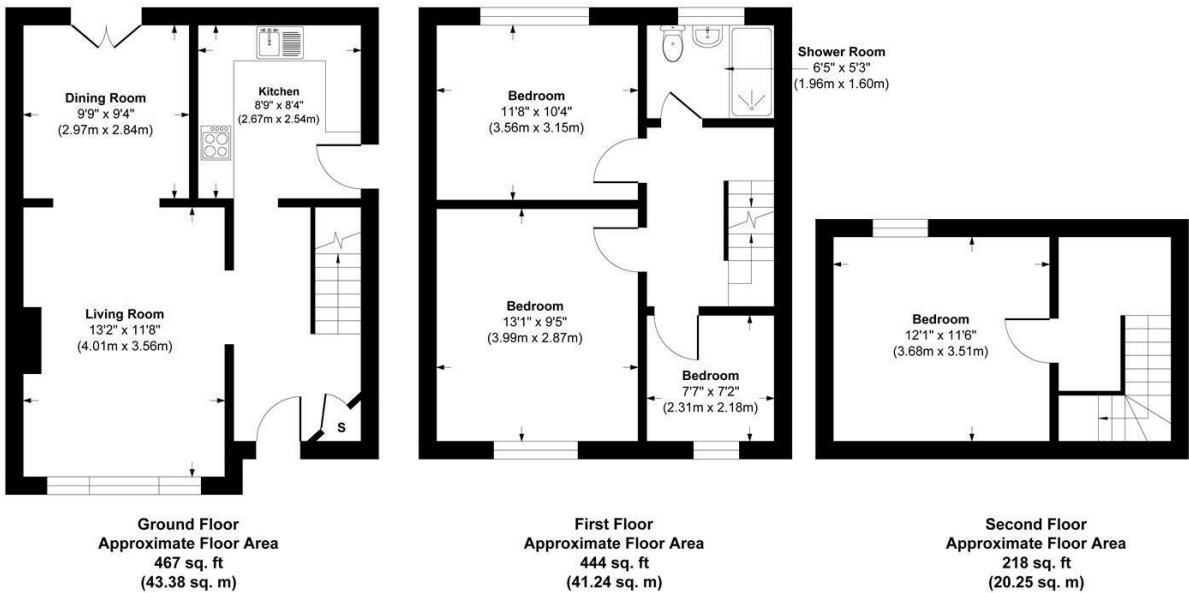
0151 329 3313

prescot@brooksestateandlettings.co.uk

www.brooksestateandlettings.co.uk

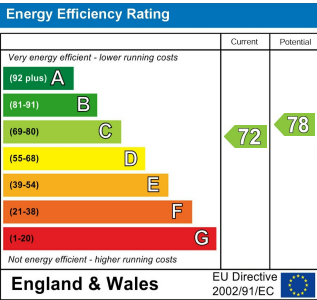
Council Tax Band

B



Approx. Gross Internal Area 1129 sq. ft / 104.87 sq. meters

Whilst every attempt has been made to ensure the accuracy of the floorplan shown, all measurements, positioning fixtures fittings and any other data shown are an approximate interpretation for illustrative purposes only and are not to scale. No responsibility is taken for any errors, omission, miss-statement or use of data show.



Agents Note: Whilst every care has been taken to prepare these particulars, they are for guidance purposes only. All measurements are approximate and are for general guidance purposes only and whilst every care has been taken to ensure their accuracy, they should not be relied upon and potential buyers are advised to recheck the measurements.

